

Cornell AgriNIR Total Mixed Ration Results – 5/21/12

Dr. L. E. Chase

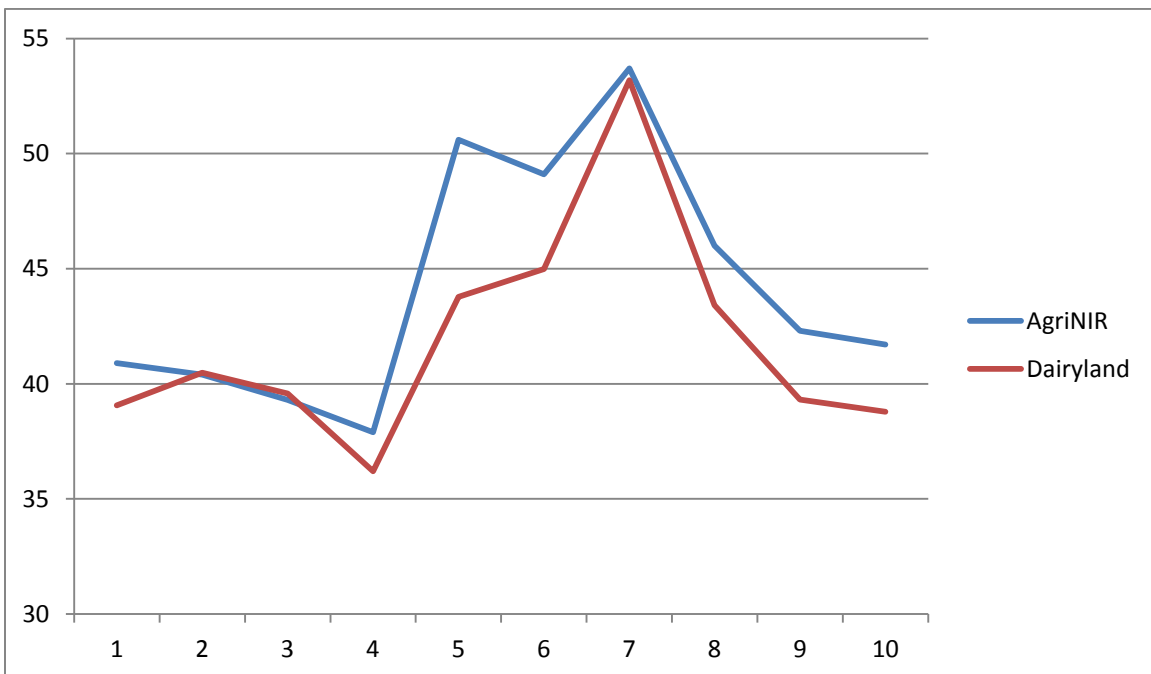
Department of Animal Science

Cornell University

This paper is an overview of the results of 10 total mixed ration (TMR) samples analyzed on 2 AgriNIR units and at Dairyland Labs to check or verify the current NIR calibrations. The 2 AgriNIR units used were the one loaned to Cornell by dinamica generale and the unit brought to Cornell by Matt Dobberstein. Matt ran the samples through both AgriNIR units and the samples were then sent to Dairyland Labs for NIR analysis. The results and comparisons in this paper are only for the unit loaned to Cornell. I do not have copies of the results from the unit that Matt brought with him. The results for these samples are provided below.

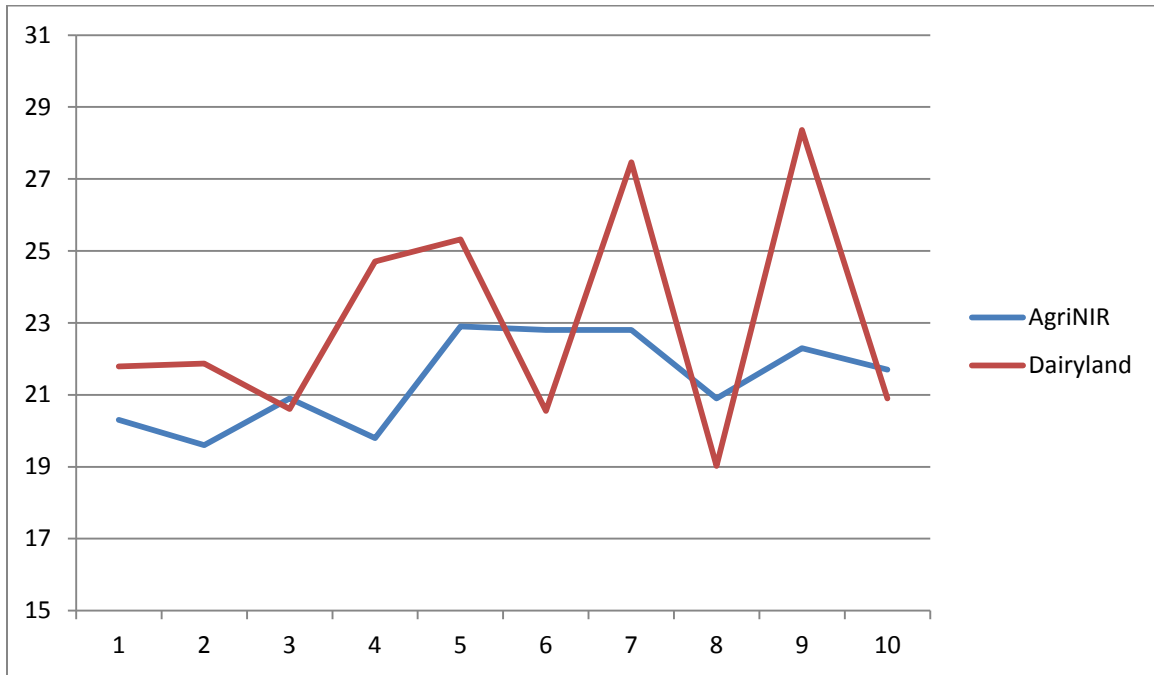
1. Dry matter –

- a. The average DM's were 44.2% (AgriNIR) and 42.9% (Dairyland)



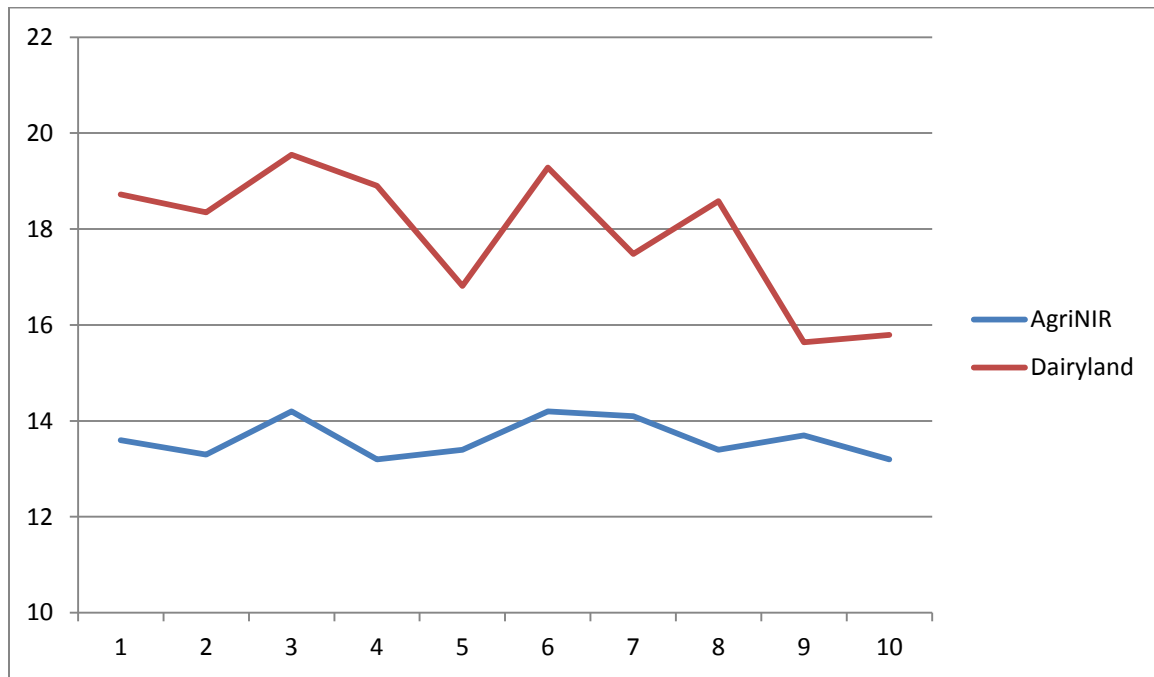
2. Starch –

a. The averages are 21.4% (AgriNIR) and 23% (Dairyland).



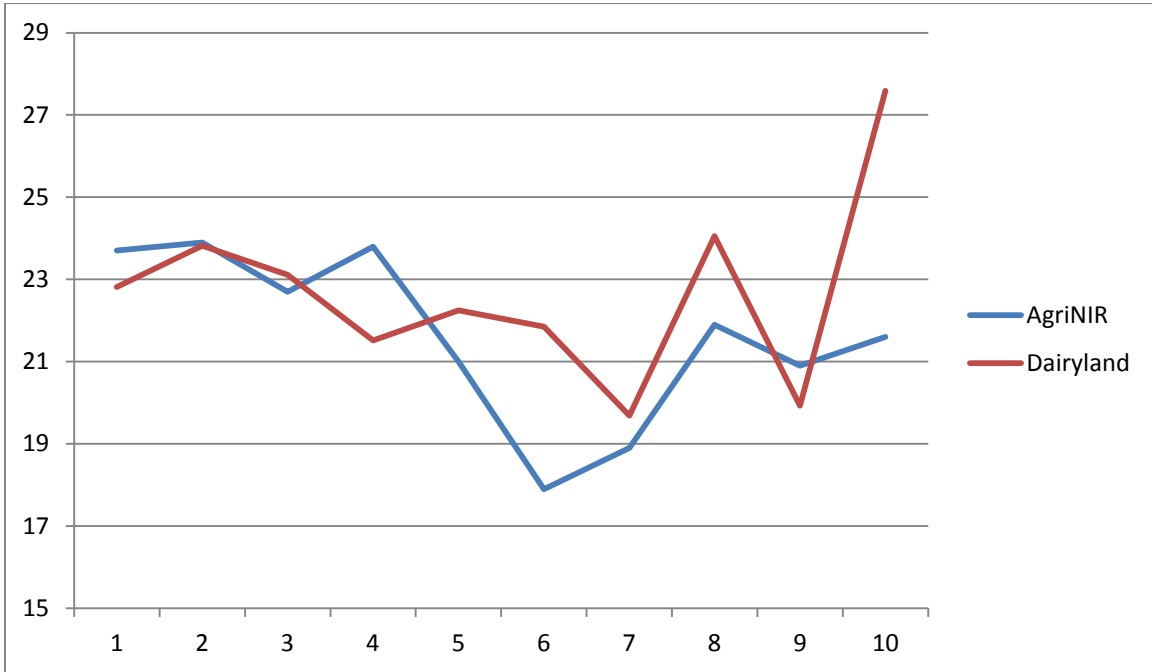
3. Crude Protein –

a. Averages are 13.6% (AgriNIR) and 17.9% (Dairyland).



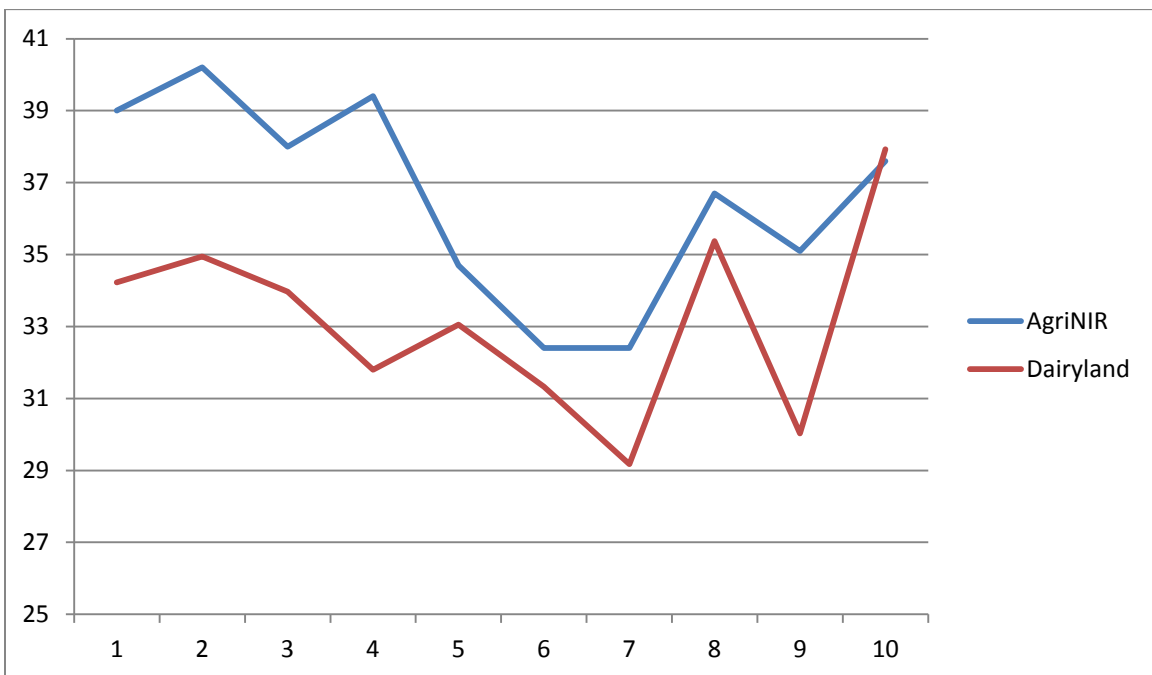
4. ADF –

a. The averages are 21.6% (AgriNIR) and 22.7% (Dairyland).



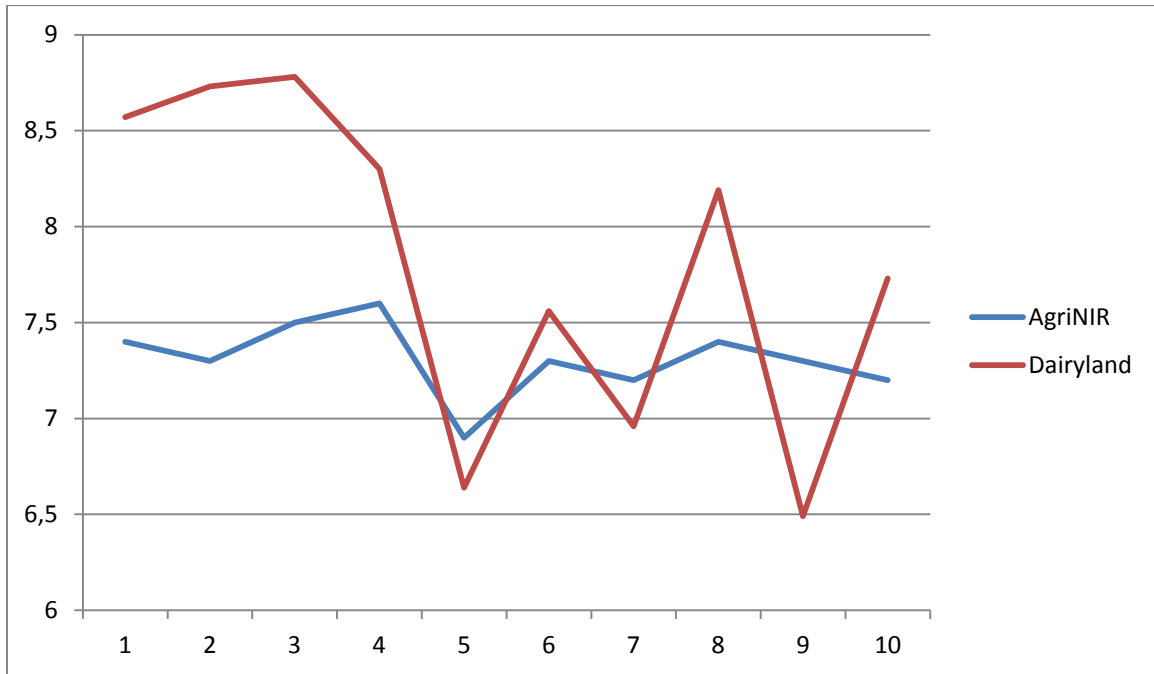
5. NDF –

a. The averages are 36.6% (AgriNIR) and 33.2% (Dairyland).



6. Ash –

a. The averages are 7.3% (AgriNIR) and 7.8% (Dairyland).



7. Fat –

a. The averages are 1.89% (AgriNIR) and 4.21% (Dairyland).

