

## Cornell AgriNIR Hay crop Silage Results – 5/21/12

Dr. L. E. Chase

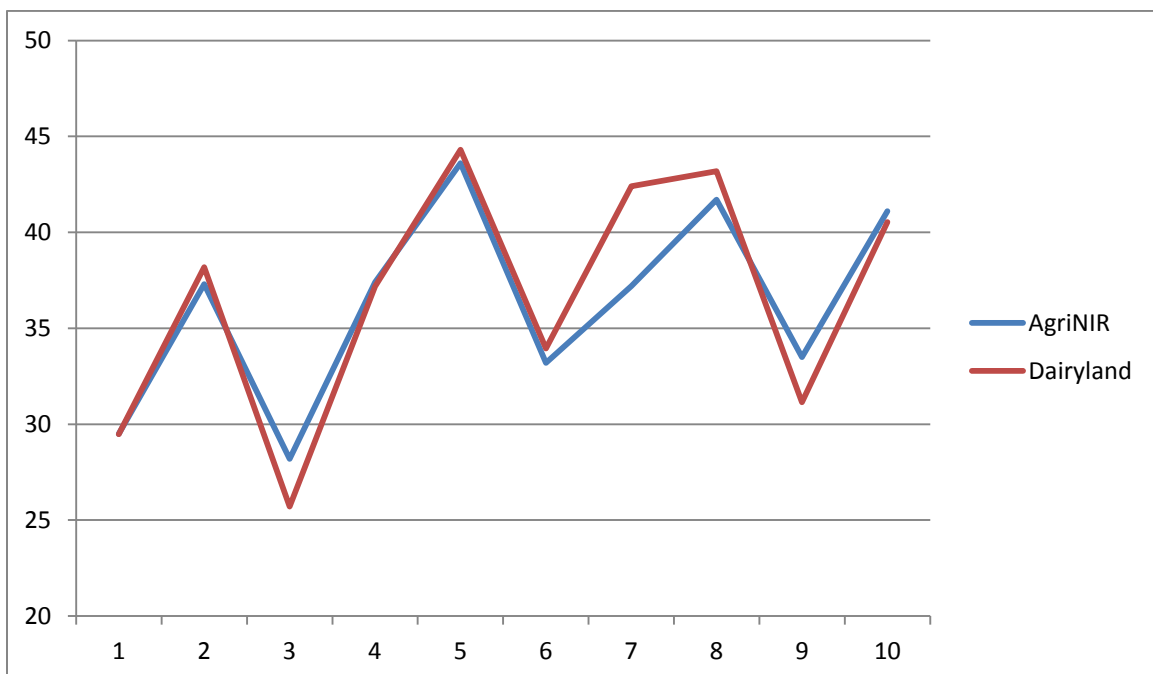
Department of Animal Science

Cornell University

This paper is a brief over view of the results of running 10 hay crop silage samples on 2 AgriNIR units and also through Dairyland Labs to check or verify the current NIR calibrations. The 2 AgriNIR units used were the one loaned to Cornell by dinamica generale and the unit brought to Cornell by Matt Dobberstein. Matt ran the samples through both AgriNIR units and then the samples were sent to Dairyland Labs for NIR analysis. The results and comparisons in this paper are only for the unit loaned to Cornell. I do not have copies of the result from the unit that Matt brought with him. The results for these samples are provided below.

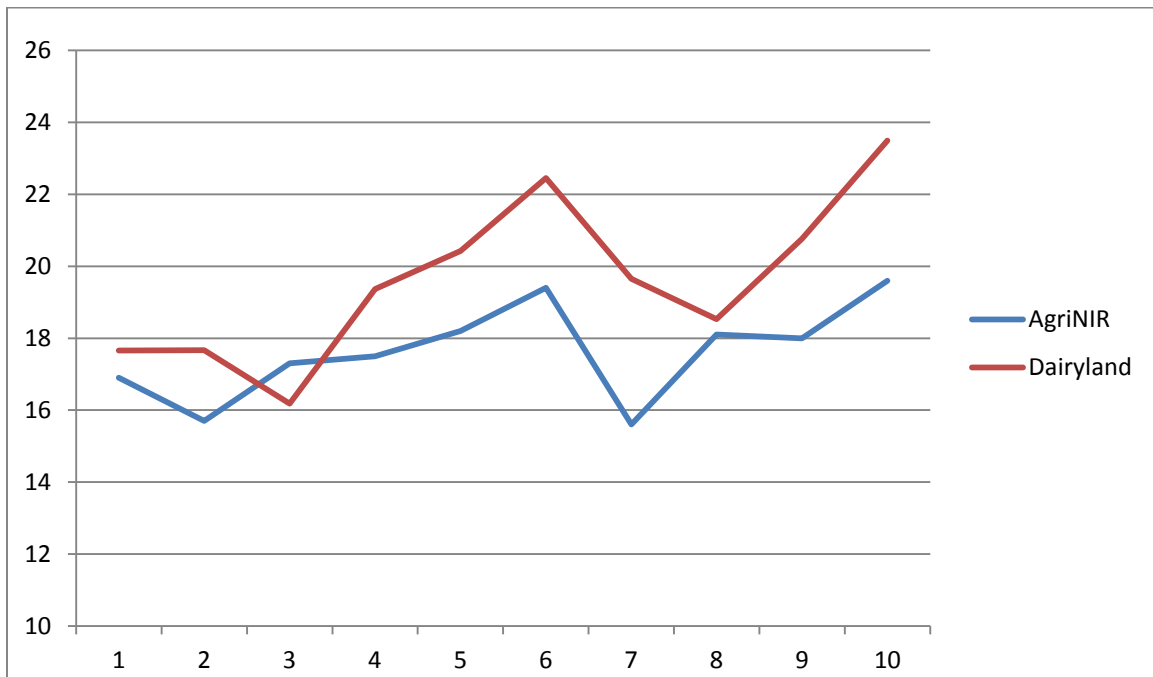
### 1. Dry matter –

- a. The average was 36.3% for the AgriNIR unit and 36.6% from Dairyland Labs.



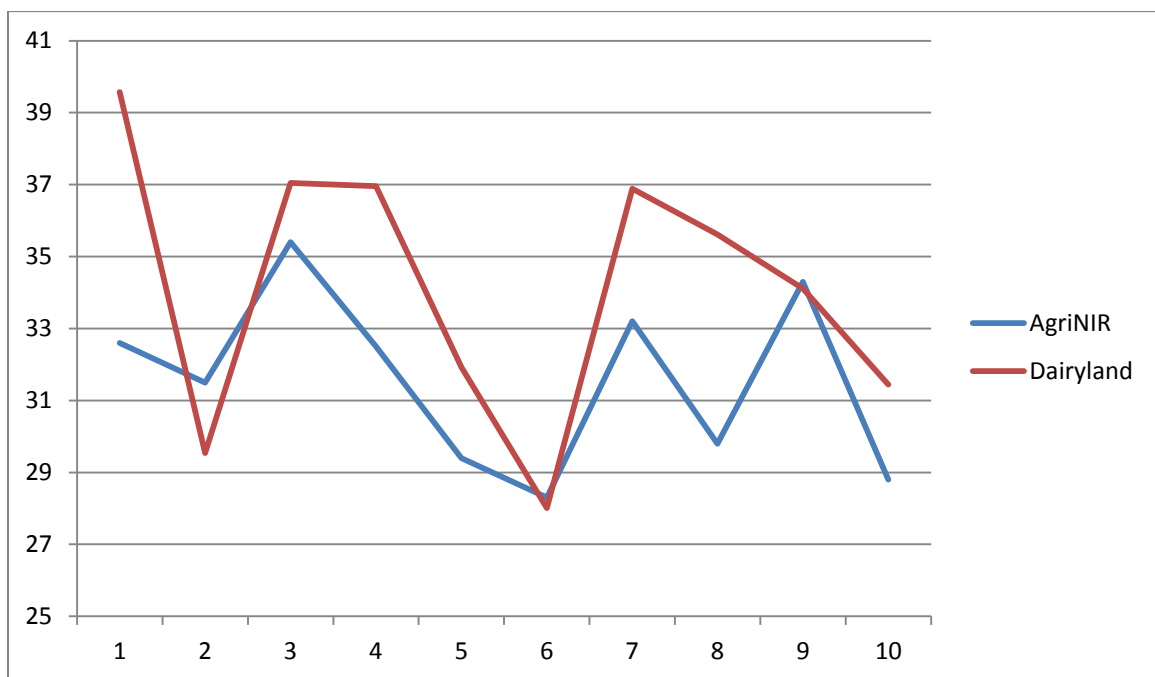
## 2. Crude Protein –

a. The averages were 17.6% (AgriNIR) and 19.6% (Dairyland)



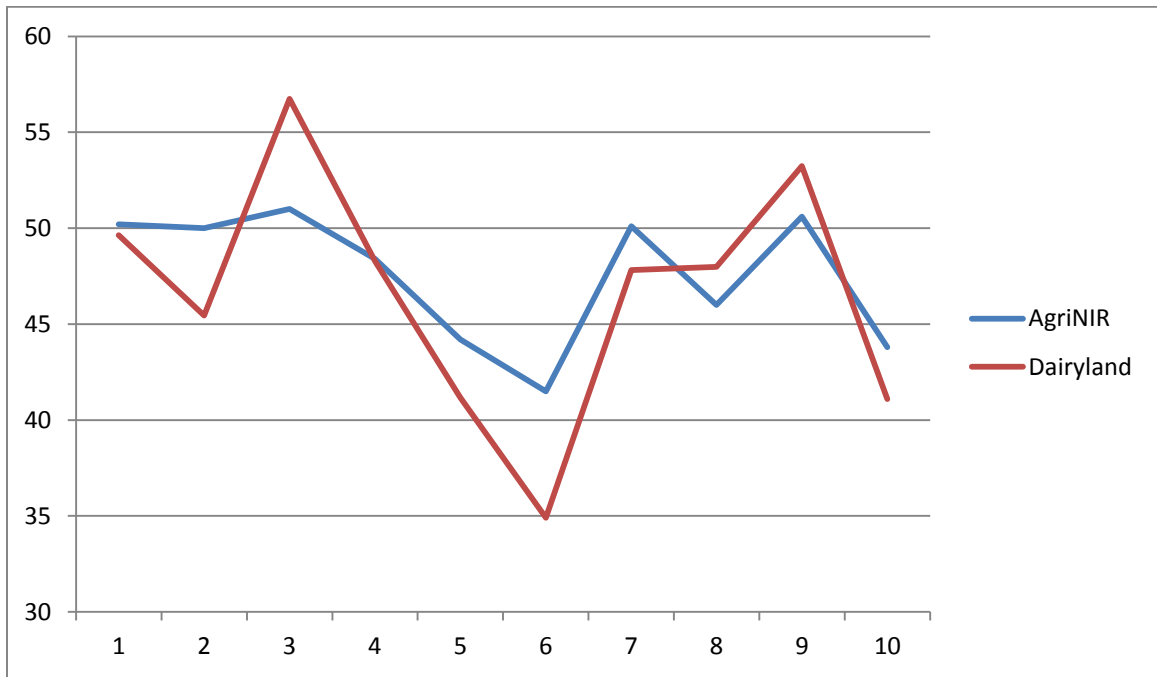
## 3. ADF –

a. Averages were 31.6% (AgriNIR) and 34.1% (Dairyland).



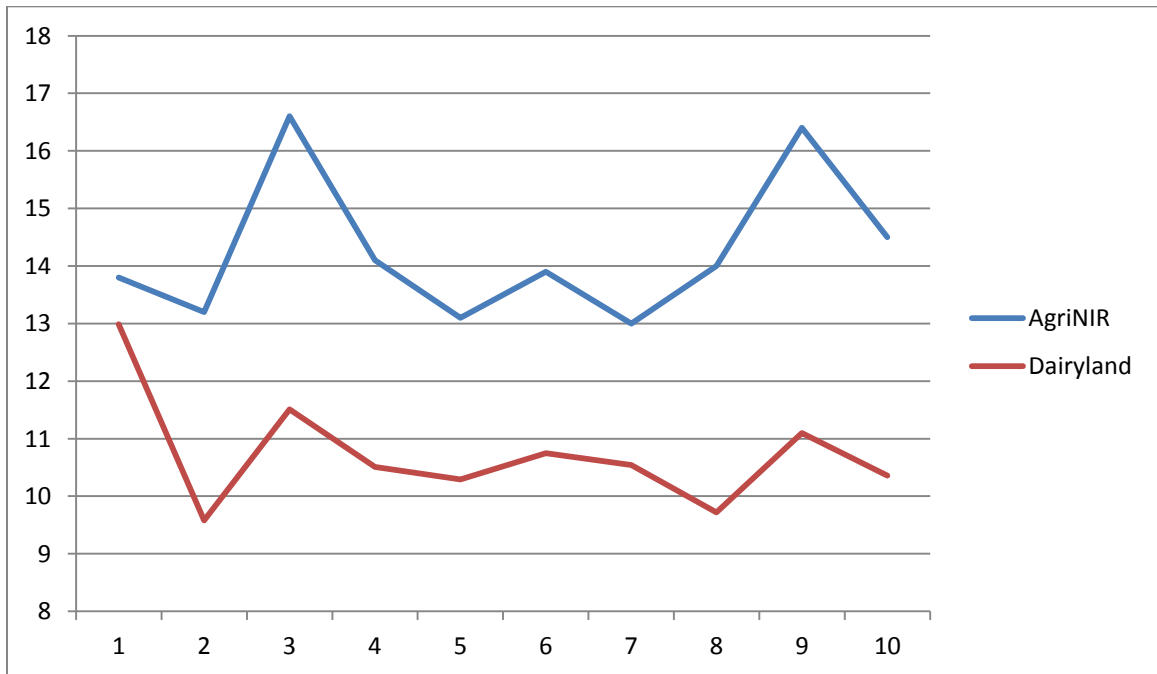
4. NDF –

- a. Averages were 47.6% (AgriNIR) and 46.6% (Dairyland)



5. Ash –

- a. Averages were 14.3% (AgriNIR) and 10.73% (Dairyland)



6. Fat –

a. Averages are 3.18% (AgriNIR) and 3.54% (Dairyland)

